

Main Unit		
Type	Personal Desktop	
Developing System	Single Component Dry Toner Protection Development	
Fixing System	On-demand Fixing	
Memory	iR1024 / iR1024F	128MB
	iR1024iF	256MB
First-Copy Time	Less than 8 sec (A4, from platen glass)	
Warm-Up Time	iR1024 / iR1024F	Less than 16 sec.
	iR1024iF	Less than 19 sec.
Copy Speed	24 pages / minute (A4)	
Copy Resolution	Read: 600 dpi x 600 dpi	
	Write: 1200 dpi enhanced x 600 dpi	
Halftone	256 Level	
Maximum Original Size	216 x 356 mm	
Magnification Zoom	50% - 200% (1% increments)	
Paper Size	Cassette	A4, LTR, LGL
	Bypass Tray	76 x 127 mm to 216 x 356 mm
Paper Capacity	Cassette	500 sheets (80g/m ²)
	Bypass Tray	100 sheets (80g/m ²)
Paper Weight	Cassette	64 - 90g/m ²
	Bypass Tray	56 - 128g/m ²
Paper Type	Cassette	Plain, Color, Recycled, Heavy, Bond
	Bypass Tray	Plain, Color, Recycled, Heavy, Bond, Transparency, Labels, Envelopes
Multiple Copies	Max. 99 copies	
Dimensions (W x D x H)	iR1024	520 mm x 457 mm x 378 mm
	iR1024F / iR1024iF	520 mm x 457 mm x 453 mm
Installation Space (W x D)	1,117 mm x 984 mm	
Weight	iR1024	Approx. 22.0 kg
	iR1024F / iR1024iF	Approx. 24.1 kg
Power Source	220-240V, 50/60 Hz	
Power Consumption	Max. 1.02 kW	

Printing Feature		
Command Language	PCL5e*, PCL6*, and UFR II LT (Std.)	
Printing Resolution	1200 dpi enhanced x 600 dpi	
Compatible OS	UFR II LT	Windows® 2000 / XP / Server 2003 / Vista / Server 2008 / Mac OS 10.2.8 or later
	PCL5e/6*	Windows® 2000 / XP / Server 2003 / Vista / Server 2008 / Mac OS 10.2.8 or later
Protocols Supported	TCP/IP	
Interface	10/100 Base-TX, USB 2.0	

Local Scanning Feature	
Maximum Scanning Size	216mm x 356mm
Scanning Resolution	600 x 600 dpi (Optical)
	9600 x 9600 dpi (Interpolated)
Scanning Speed	Color / Grayscale: 2.56 msec / line (600 dpi)
Host Interface	USB 1.1, USB 2.0
System Requirements	Windows® 2000 Professional / XP (32-bit version) / Windows® Vista
Device Driver	TWAIN and WIA (Windows® XP / Windows® Vista only) compliant

Duplex Automatic Document Feeder (For iR1024F / 1024iF only)	
Acceptable Originals	139.7 x 128 mm to 216 x 356 mm
Maximum Paper Weight	One-sided scanning: 50 to 128 g/m ² Two-sided scanning: 50 to 105 g/m ²
Original Tray Capacity	50 sheets (80 g/m ²)
Maximum Original Scanning Speed	20 pages / minute

Universal Send Feature (For iR1024iF only)	
Communication Protocol	FTP (TCP/IP), SMB (TCP/IP)
Data Format	TIFF (B&W), PDF (B&W), JPEG (Color), PDF (Compact)(Color)
Resolution	100 x 100 dpi, 150 x 150 dpi, 200 x 100 dpi, 200 x 200 dpi, 200 x 400 dpi, 300 x 300 dpi, 400 x 400 dpi, 600 x 600 dpi
System Environment	Windows® XP / 2000 / Server 2003 / Vista / Server 2008 / Mac OS X / Mac OS 10.2.8 & above
Interface	100BASE-TX, 10BASE-T, USB 2.0
Color Mode	Color, Black and White
Original Type	Text, Text / Photo, Photo

E-mail and I-Fax Features (For iR1024iF only)		
Communication Protocol	SMTP, POP, I-Fax (Simple mode)	
Resolution	For Sending E-mail	100 x 100 dpi, 150 x 150 dpi, 200 x 100 dpi, 200 x 200 dpi, 200 x 400 dpi, 300 x 300 dpi, 400 x 400 dpi, 600 x 600 dpi
	For Sending I-Fax	200 x 100 dpi, 200 x 200 dpi
Format	E-mail	TIFF (B&W), PDF (B&W), JPEG (Color), PDF (Compact) (Color)
	I-Fax	TIFF (MH)
Original Size	E-mail	A4, A5, A5R, B5, LTR, LGL, STMT, STMT
	I-Fax	A4, A5, A5R, B5, LTR, LGL, STMT, STMT
Server Software	Microsoft Exchange Server 5.5 (SP2) Sendmail 8.11.2, Lotus Domino R4.5/R5	

Super G3 Fax Feature (For iR1024F / 1024iF only)	
Applicable Line	Public Switched Telephone Network (PSTN)
Transmission Speed	Super G3: 33.6 kbps
Compression Method	MH, MR, MMR, JBIG
Auto Dial Function	One-touch speed dialing: 23 destinations Coded speed dialing: 177 destinations

Cassette Feeding Module-N2 (Optional)	
Paper Size	A4, LTR, LGL
Paper Capacity	500 sheets x 1 drawer (80 g/m ²)
Dimensions (W x D x H)	520 mm x 440 mm x 158 mm

* Requires PCL Printer Kit AB1

Options:

- Card Reader - E1
- Network I/F Adapter IN-E11 (for iR1024 / 1024F)
- PCL Printer Kit - AB1



A smart and compact device with Canon's cutting-edge digital technology for modern offices

Understanding the needs of versatile office environments, the iR1024 series is built with Canon's leading-edge digital processing technologies to optimize productivity and enhance efficiency for both SMEs and corporate workgroups.

This sophisticated device comes with a subtly compact design and a rich array of input and output features. Its user-friendly solutions not only make a truly digitized office come true with ease, but also help users to handle multitasking jobs smoothly with low operational cost.

The iR1024 series device is an indispensable tool for office of all kinds that strive for greater business development and higher accuracy at work.



iR 1024

iR 1024 F / iR 1024 iF

	Copy	Duplex Print	Color Scan	Fax	Color Send	Network
iR1024	✓	✓	✓			Optional
iR1024F	✓	✓	✓	✓		Optional
iR1024iF	✓	✓	✓	✓	✓	✓



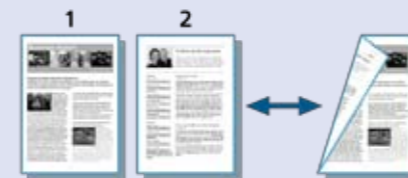
Technology

Offering the elements you need in digital office environments



Highlighting compact design

Designed to save space for every office, the main unit of iR1024 series are merely 520mm. More significantly, this compact design enables the device to handle double-sided output completely with easy access for replenishing supplies in a busy working environment.

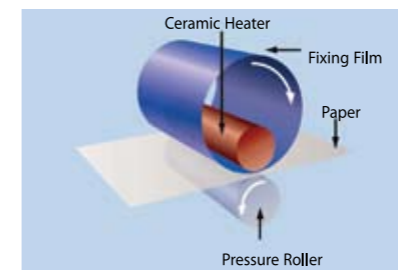


Handling double-sided documents automatically

This compact device featuring Automatic Trayless Duplexing, this device also supports double-sided printing functions for COPY, FAX, and PRINT.

Saving energy with fast warm-up time

Built with a new On-demand Fixing technology, the iR1024 series can reduce power consumption to 5W in Energy Save mode. Also, it enables quick warm-up time from sleep states within 1 second.



● On Demand Fixing Method

Replacing toner bottle with ease

Realizing the importance of an uncluttered office, the iR1024 series features a convenient set-on toner bottle design to offer a simpler and cleaner toner bottle replacement method for all users.



Enhancing operating efficiency with intuitive LCD Panel

This device comes with a user-friendly LCD panel for easy operation. Fax functionality includes 23 one-touch speed dial keys, 177 coded speed dials, and group dialing for fast access to frequently called numbers.



Offering high protection with sophisticated green technology

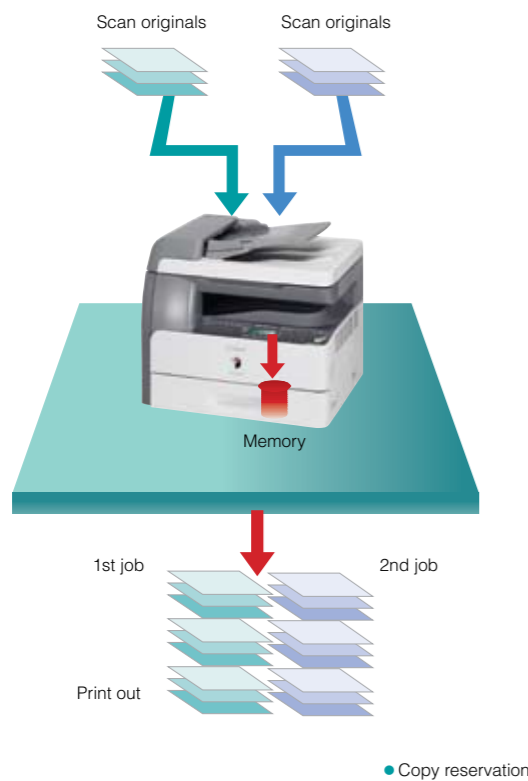
Paying attention to environmental protection. The iR1024 series also supports European RoHS standards and fully complies with the International Energy Star Program.

Copy

Enabling smart copying with ease-to-use functionality

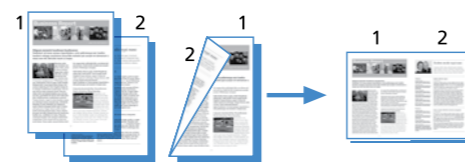
Saving time with Copy Reservation

With Copy Reservation feature, users do not need to stand in front of the device waiting for someone's print or copy job to be completed. This significantly saves time and allows walk-up users to program all settings and scan originals into the memory. Its built-in Scan-Once-Print-Many function can scan originals into the memory, enabling copy jobs to be done automatically with sequence control.



Reducing paper consumption and boosting convenience with 2-on-1 Combination

The iR1024 series features a 2-on-1 combination that automatically copy two documents and print them on one selected paper size. This not only saves paper but also reduces filing space and fax expenses.



Cleaning up documents with frame erase mode

To ensure excellent outputs, this device is equipped with a convenient frame-erase mode to help users erase shadows and lines when copying various types of documents. This is especially good for copying documents with punch holes or the images of original book frames.



Using Electronic Copy Collation to simplify document procedures

With a refined Copy Collation feature, users can simplify business procedures by collating copied documents into arranged sets with page order. Operating with the Scan-Once-Print-Many technology, one complete set of output, up to 99 multi-page documents, can be done without hassle in descending page order.



Print

Empowering extraordinary printing performance

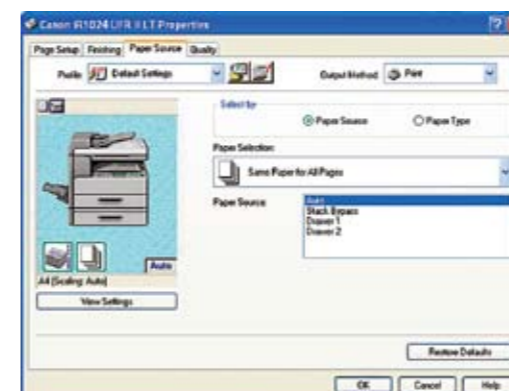
Achieving high performance with sophisticated UFR II LT technology

The iR1024 is built with an exceptional UFR II LT (Ultra-Fast Rendering II LT) technology, which enables high-speed printing at 1200 dpi enhanced x 600 dpi resolution. Also, it supports the optional PCL5e/6 technology to enable efficient data translation into different printer languages.



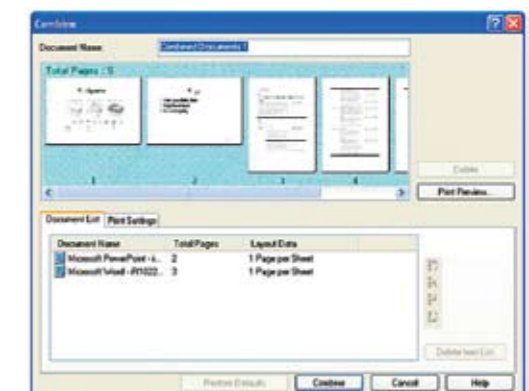
Offering easy-to-use printer drivers with enhanced capabilities

This device comes equipped with a sophisticated but user-friendly interface that is designed to cater for the versatile user needs. These ingeniously designed printer drivers and utilities enable both local and network-connected users to program printer tasks with no hassle.



Utilizing PageComposer to view and merge documents

With Canon's PageComposer, users can view and combine two or more jobs created by different applications into a single electronic document. Also, users can preview, manipulate, and print e-documents anytime with ease.



Scan & Send

Realizing highly efficient e-communication with innovative technology

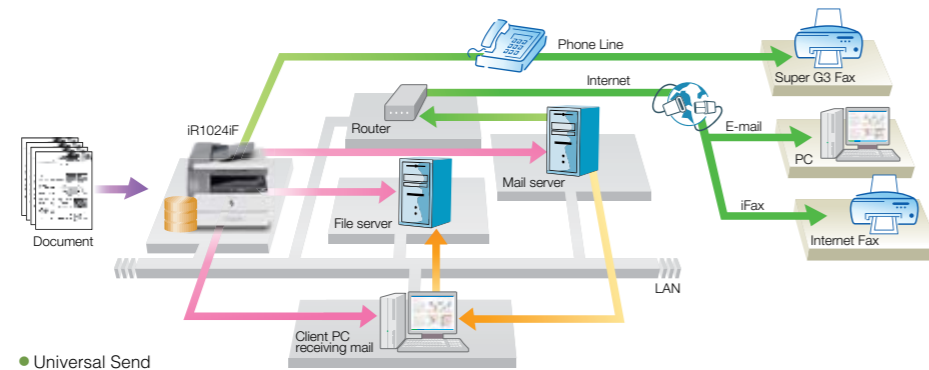
User-friendly Color Scan for light scanning requirements

With a sophisticated USB-connected local color scan feature, the iR1024 series supports both TWAIN and WIA standards and can capture black and white or color documents efficiently. Also, its iR toolbox driver provides outstanding operability and reliability for workgroups with light scanning requirements.



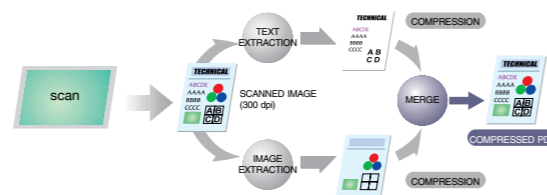
Making multi-destinations delivery possible with Universal Send

Simplifying the workflow with ease, iR1024 iF is equipped with Canon's Universal Send technology that allows documents to be sent to multiple destinations in a single operation through optional Super G3 Fax, or via Internet as e-mail or I-fax.



Reducing document data volume with high compression PDF conversion

The iR1024iF employs Canon's high-compression PDF conversion technology which can significantly compress the size of full-color document files so that they can be easily transmitted over networks. As a result, the file is compressed to about one-tenth of the original size without compromising image quality.



Supporting various file format and scanning modes

This device supports both PDF and TIFF formats as standard for monochrome scanning, as well as JPEG and PDF (Compact) formats for full-color scanning. This enables users to control the file size with superb image quality on every job, avoiding the possibility of overloading the network.

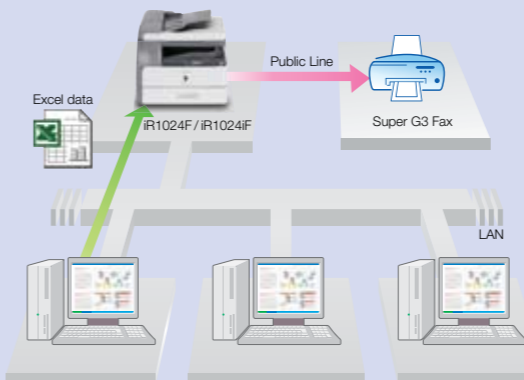
Fax

Delivering sharp fax functionality



Allowing paperless fax to cut unnecessary printouts

Supporting convenient PC fax, users can operate the Canon Fax Driver to fax documents directly from a PC for ultimate efficiency. As a result, paperless fax helps enhance productivity, reduce costs, and preserve resources.



Enhancing the efficiency of fax distribution by Fax Forwarding

With the use of fax forwarding feature, received documents matching the specified forwarding conditions will be forwarded to the desired destination. This assists in sorting and delivers received fax or I-fax to the appropriate destinations smoothly, which eliminates unnecessary printing of the documents.

Storing all incoming faxes in memory

In case of any printing problem, such as the exhaustion of toner or paper, this device can automatically store all incoming faxes in memory. Also, users can program the device to store all received documents in memory beforehand and print them anytime later.

Speeding up transmission with Super G3 fax technology

Equipped with Super G3 technology, the iR1024F/1024iF features a 33.5 Kbps fax transmission speed of approximately 3 seconds per page. With Duplexing Automatic Document Feeder (DADF), it enables hassle-free fax transmission even when processing a double-sided original.



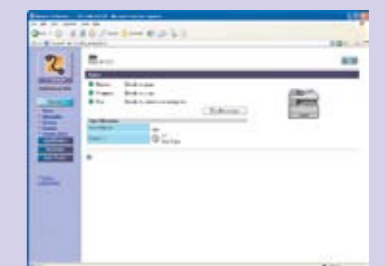
Management Boosting work efficiency

Prohibiting unauthorized access by Department ID Management and control card system

With the standard Department ID Management settings and the optional control card system, the company can protect the device from unauthorized access. Up to 1,000 department/user IDs and passwords can be registered to help keep track of the copy, scan, and print totals for each department, as well as to control costs.

Facilitating device management with Remote UI#

The Remote User Interface (UI) function provides remote access and device management via a standard Web browser. Users can control all device functions remotely from an Internet-enabled PC, such as confirming the status of the device and all job operations.



*Network connection is required.