

# Acer Projectors with 3D Technology

Quick Guide

© 2011 All Rights Reserved.

Acer Projector Series Quick Guide  
Original Issue: 02/2011

Model number: \_\_\_\_\_

Serial number: \_\_\_\_\_

Date of purchase: \_\_\_\_\_

Place of purchase: \_\_\_\_\_

The Acer projector you have bought has integrated DLP and NVIDIA 3D technology.

If you have connected your projector to a computer, please read sections "Using NVIDIA 3D technology" on page 4 or "Using DLP 3D technology" on page 7.

If you have connected your projector to a DVD or Blu-ray player, please read "Watching 3D DVD or Blu-ray content" on page 10.



**Important:** When you turn the 3D technology on, you will be shown a reminder that 3D is enabled. If you do not wish to view 3D content, you should turn it off, otherwise the image may not be projected at full brightness.

Note: 3D display is now enabled.

1. Please make sure you have the correct 3D signals and glasses.
2. Remember to turn 3D off if you don't want to see 3D images.
3. If the 3D display isn't correct, please try to enable 3D Sync Invert.
4. Display mode options will be disabled while in 3D mode.

If you are using an HDMI 1.4 connection and Blu-ray 3D content or above you will also be prompted to select the type of 3D glasses you are using. Make your selection and press **Menu** to confirm.



## Using 3D glasses

NVIDIA 3D Vision and DLP 3D glasses are powered. In order to enhance battery life, they turn off after a few minutes of inactivity. Before you can view 3D content, you need to ensure the glasses are turned on. In many cases, there is a power switch on one of the arms that you can press, and an LED that indicates if the glasses are turned on or not.



**Note:** Refer to the documentation that came with your glasses for instructions how to turn them on and how to change the battery.

# Using NVIDIA 3D Vision technology

*Only available with NVIDIA 3D Vision certified projectors when using NVIDIA 3D glasses.*

Before you can enjoy the benefits of the NVIDIA 3D technology, you will need to do the following.

- 1 Ensure your graphics card is supported. Please visit [www.nvidia.com/object/3D\\_Vision\\_Requirements.html](http://www.nvidia.com/object/3D_Vision_Requirements.html) to see if your graphics card is listed. If you are unsure, there is an automatic tool at the top of the page that may help you.



.....  
**Important:** Only NVIDIA graphics cards are supported.

- 2 Download and install the 3D drivers and 3D player from [www.nvidia.com/object/3D\\_Drivers\\_Downloads.html](http://www.nvidia.com/object/3D_Drivers_Downloads.html).
- 3 You should also download a suitable 3D player such as the one available from [www.3dtv.at](http://www.3dtv.at).



.....  
**Note:** You may need to purchase additional software.

- 4 Ensure you have the NVIDIA 3D glasses and IR-transmitter.

## Setting up a 3D environment

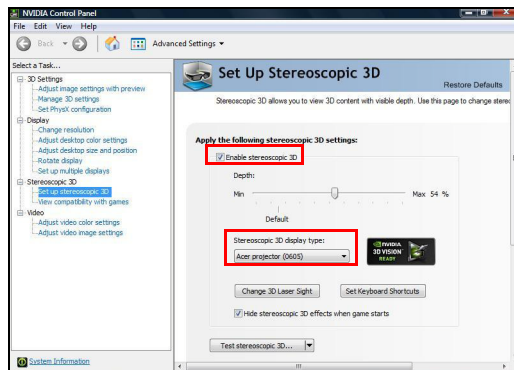
Once you have installed the drivers, you will need to set up the environment.

- 1 Position the infra-red transmitter so that it has maximum coverage. The transmitter controls the 3D glasses and is necessary to view 3D content. Plug the USB cable in to an available USB port on your computer.

- 2 Right-click anywhere on the desktop and select **NVIDIA Control Panel**. This will open the setup Wizard if you haven't previously set up the 3D environment.

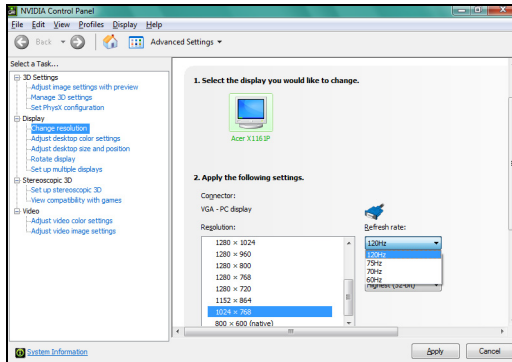


- 3 Follow the onscreen instructions to set up the 3D environment.
- 4 Check the **Enable Stereoscopic 3D** option and select the correct display type.

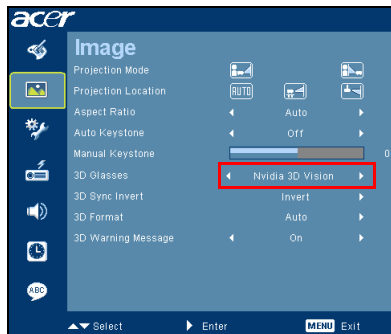


- 5 In the **Select a task...** list, select **Change Resolution**. Make sure the refresh rate of the display has been set to **120Hz** (from the appropriate drop-down menu).

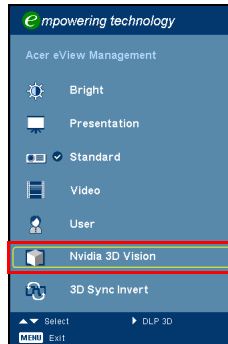
If you are viewing Blu-ray 3D content over an HDMI 1.4a or later connection, this will be set automatically.



- 6 Press the menu button on the projector remote control to open the OSD. Select the **Image** section (second menu option) on the left-hand side of the window.
- 7 Set 3D Glasses to **Nvidia 3D Vision**.



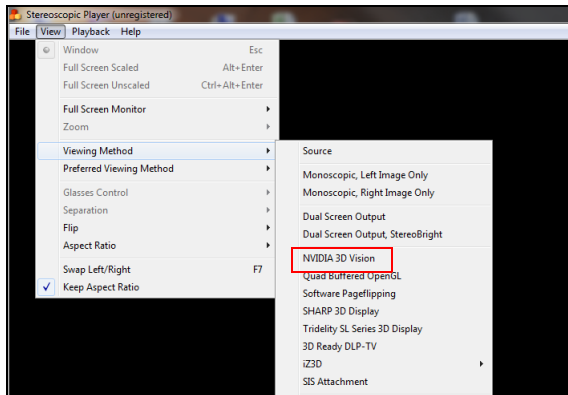
- 8 Alternatively, press the Empowering Key on your projector's remote control to open Acer eView Management. From the 3D options, select **Nvidia 3D Vision**.



## Using the stereoscopic player

You need to have a stereoscopic player in order to view 3D content. The instructions below explain how to view 3D content using the Stereoscopic player that is available at [www.3dtv.at](http://www.3dtv.at). Other players may have different procedures.

- 1 Open the stereoscopic player and set the viewing method by going to **View > Viewing Method > NVIDIA 3D Vision**.



- 2 Open the 3D content in the player.



**Note:** You need to view content at fullscreen resolution in order to get the 3D effects.

# Using DLP 3D technology

*Also available with NVIDIA 3DTV Play ready projectors when using DLP 3D glasses.*

Before you can enjoy the benefits of the DLP 3D technology, you will need to do the following.

- 1 Ensure your graphics card supports 3D playback.



.....  
**Note:** Please refer to your graphics card's documentation.

- 2 Download and install the latest drivers for your graphics card.



.....  
**Note:** Please refer to your graphics card vendor's website for the latest driver version.

- 3 You should also download a suitable 3D player such as the one available from **www.3dtv.at**.

To download software and use an NVIDIA 3DTV Play ready projector with DLP glasses, refer to the NVIDIA 3DTV website: **www.nvidia.com/3dtv**.



.....  
**Note:** You may need to purchase additional software.

- 4 Ensure you have the correct DLP-compatible 3D glasses.

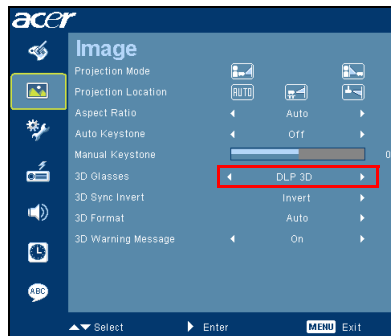
## Setting up a 3D environment

Once you have installed the drivers, you will need to set up the environment.

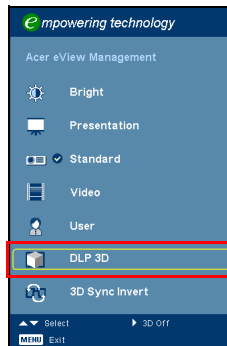
- 1 Set the refresh rate to **120 Hz** on your graphics card.  
If you are viewing Blu-ray 3D content over an HDMI 1.4a or later connection, this will be set automatically.
- 2 Press the menu button on the projector remote control to open the OSD. Select the **Image** section (second menu option) on the left-hand side of the window.



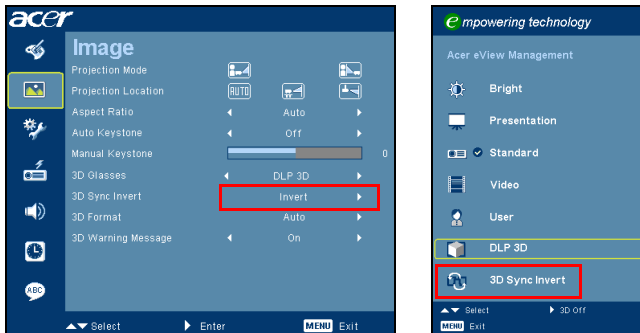
3 Set 3D Glasses to **DLP 3D**.



4 Alternatively, press the Empowering Key on your projector's remote control to open Acer eView Management. From the 3D options, select **DLP 3D**.

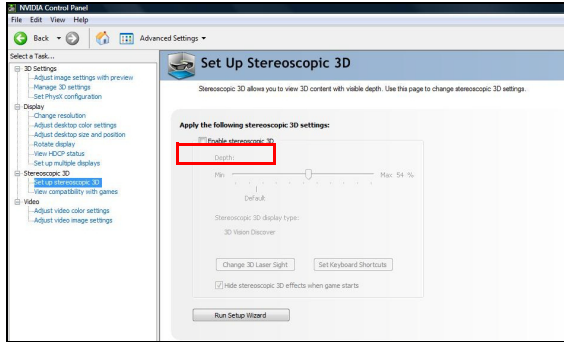


5 If you find that the 3D content is not displaying properly, try selecting **3D Sync Invert** from the projector OSD or Acer eView Management.





**Important:** If you have an NVIDIA graphics card and the NVIDIA 3D Vision drivers installed, you may need to disable the Stereoscopic feature to use the DLP 3D technology.

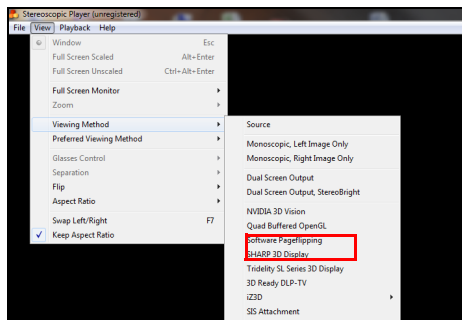


## Using the stereoscopic player

You need to have a stereoscopic player in order to view 3D content. The instructions below explain how to view 3D content using the Stereoscopic player that is available at [www.3dtv.at](http://www.3dtv.at).

Other players may have different procedures, e.g. to download and use the NVIDIA 3DTV Play software (including a free photo viewer) with DLP glasses, refer to the NVIDIA 3DTV website: [www.nvidia.com/3dtv](http://www.nvidia.com/3dtv).

- 1 Open the stereoscopic player and set the viewing method by going to **View > Viewing Method > Software pageflipping**.



- 2 Open the 3D content in the player.



**Note:** You need to view content at fullscreen resolution in order to get the 3D effects.

# Watching 3D DVD or Blu-ray content

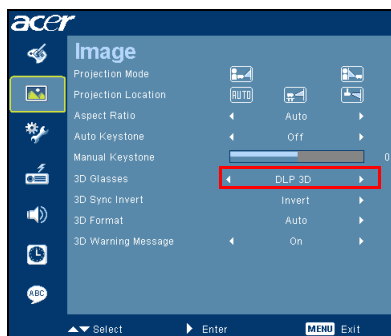
If you have a DVD or Blu-ray player that supports 3D playback, you can watch 3D DVD content using your Acer 3D-enabled projector. Connect your DVD or Blu-ray player to the projector using any of the available input formats.



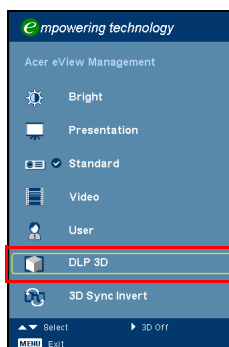
**Note:** If your DVD or Blu-ray player supports 3D over HDMI 1.4a, check that 3D options are on and the video uses 24p before turning on your projector.

Older connections should check the resolution is set to 480i or 576i.

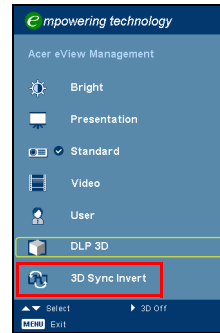
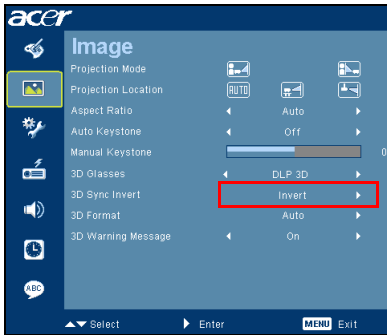
- 1 Press the menu button on the projector remote control to open the OSD. Select the **Image** section (second menu option) on the left-hand side of the window.
- 2 Set 3D to **DLP 3D**.



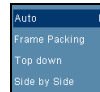
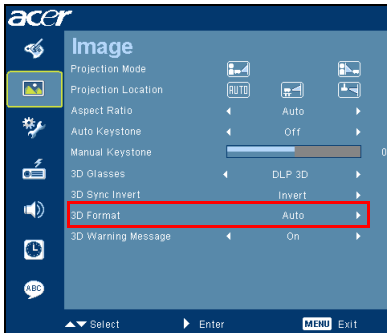
- 3 Alternatively, press the Empowering Key on your projector's remote control to open Acer eView Management. From the 3D options, select **DLP 3D**.



- 4 If you find that the 3D content is not displaying properly, try selecting **3D Sync Invert** from the projector OSD or Acer eView Management.



- 5 If this does not improve the image, and you are using an HDMI 1.4 connection, change the **3D Format** to match the signal sent by your player.



**Note:** The 3D Format option is only available for HDMI 1.4 or above connections. Some older Blu-ray players and most DVD players use HDMI 1.3 or earlier, please check your player's specifications.